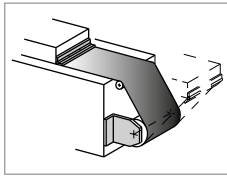


FORMULAIRES DE DEMANDE

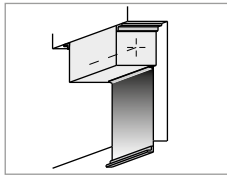
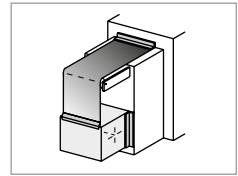
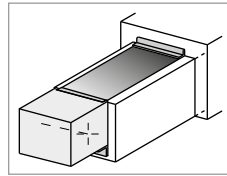
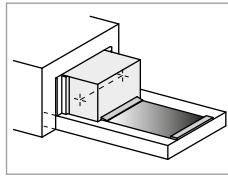
Demande caches de bandes de roulement

Roll-up covers question form

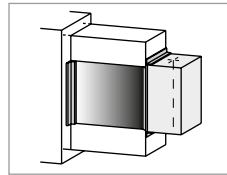
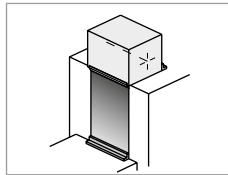
Positions de travail sur la machine Work position on the machine



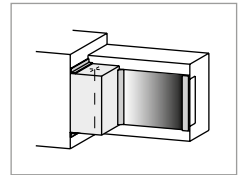
Horizontal
Horizontal



Vertical
Vertical



Frontal
Frontal



Type de machine (par ex. meuleuse) :

Type of machine (e.g. grinding machine): _____

Conditions Conditions

Environnement Environment

Poussière
dust

Autres :
other: _____

Température ambiante
Ambient temperature _____ °C

Température du matériau
Material temperature _____ °C

Réfrigérant : oui non
Coolant: yes no

QUESTION FORMS

Longueur de la bande de roulement déployée A_Z : _____ mm
 Length of the roller band extended A_Z : _____ mm

Largeur de la bande de roulement B : _____ mm
 Width of roll-up cover B: _____ mm

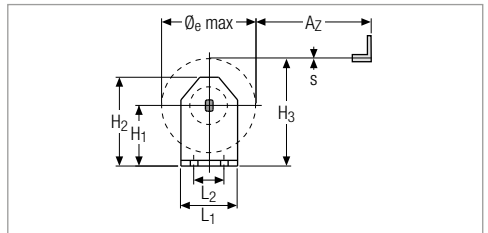
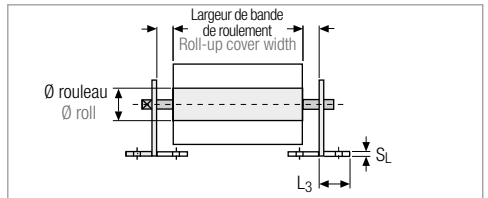
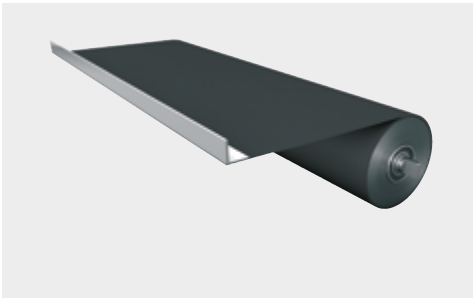
Course / déplacement L_S : _____ mm
 Travel length/Stroke L_S : _____ mm

Vitesse de déplacement V : _____ m/min
 Travel speed V: _____ m/min

Accélération a : _____ m/s²
 Acceleration a: _____ m/s²

Espace d'installation pour bande de roulement (L x l) : _____ mm
 Installation space wound up roll-up cover (L x W): _____ mm

Modèles Versions



H_1 sur l'équerre de fixation dépend de la longueur de la bande, de l'épaisseur de la bande et ainsi, du diamètre 'de la bobine.

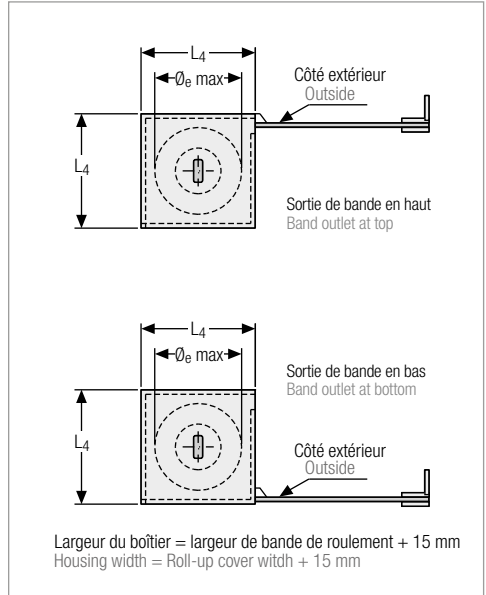
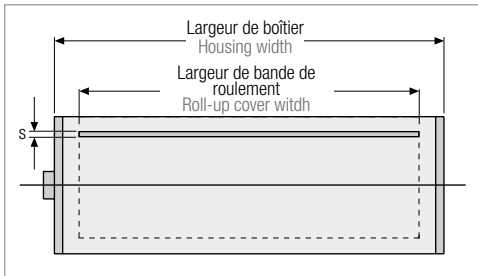
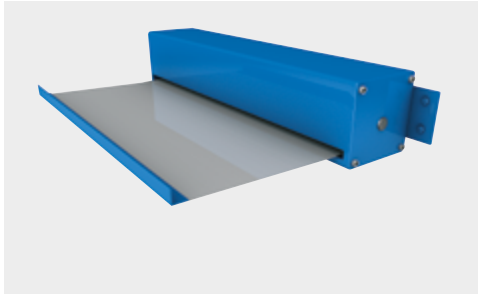
H_1 on fixing angle depends on the band length, the band thickness and thereby the winding diameter.

Bande de roulement sans boîtier (modèle avec bande en plastique)
 Roll-up cover without housing (version with plastic band)

Informations complémentaires Supplementary information

Grid area for supplementary information.

FORMULAIRES DE DEMANDE



Bande de roulement avec boîtier (modèle avec bande en plastique ou bande acier)
Roll-up cover with housing (version with plastic or steel belt)

Sortie de bande en haut
Band outlet at top

Sortie de bande en bas
Bottom band outlet

Matériaux Materials

Type de bande en plastique (choix du matériel selon l'utilisation par ex. PVC, PUR, Kevlar®)
Plastic belt design version (material selection according to application e.g. PVC, PUR, Kevlar®)

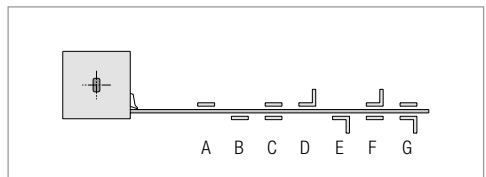
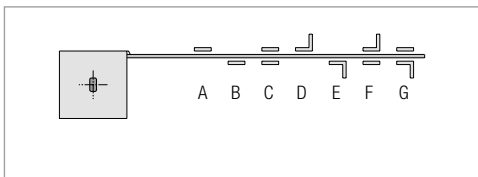
Type de bande en acier :
Steel band design version:

INOX 0,2 mm
INOX 0.2 mm

INOX 0,3 mm
INOX 0.3 mm

INOX 0,4 mm
INOX 0.4 mm

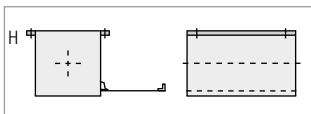
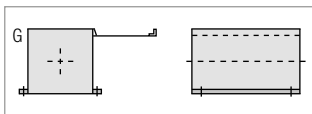
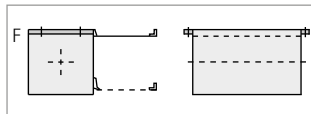
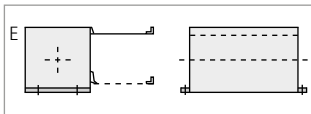
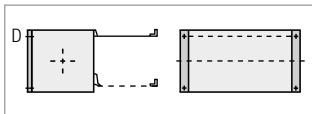
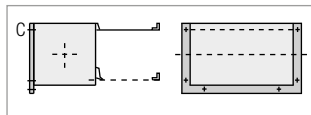
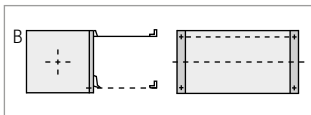
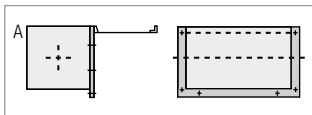
Fixation de la bande sur la machine Belt fixing on machine



Type de fixation de la bande (par ex. 1D) :
Band fixing version (e.g. 1D):

QUESTION FORMS

Raccord de fixation du boîtier *Fixing connection of the housing*



Type de fixation du boîtier (par ex. C) :
Design version for housing fixing (e.g. C):

Sketch/Illustrations joint(e)s :
Sketch/Pictures enclosed:

oui
yes

non
no

Informations complémentaires *Supplementary information*

Grid area for supplementary information.