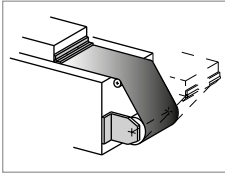


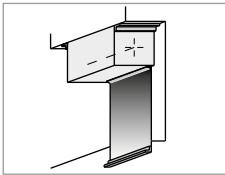
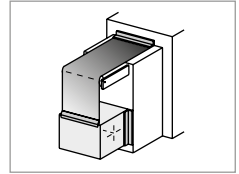
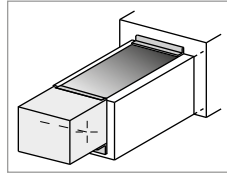
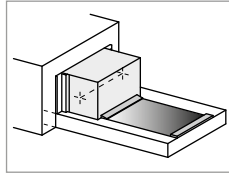
# FORMULAIRES DE DEMANDE

## Demande pour rideau enrouleur Roll-up covers question form

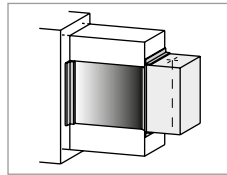
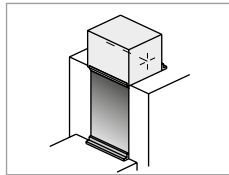
### Positions de travail sur la machine Work position on the machine



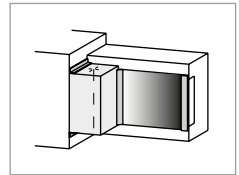
Horizontal  
Horizontal



Vertical  
Vertical



Frontal  
Frontal



Type de machine (par ex. meuleuse) :  
Type of machine (e.g. grinding machine): \_\_\_\_\_

### Conditions Conditions

#### Environnement Environment

Poussière  
dust

Autres :  
other: \_\_\_\_\_

Température ambiante  
Ambient temperature \_\_\_\_\_ °C

Température du matériau  
Material temperature \_\_\_\_\_ °C

Réfrigérant :                      oui                      non  
Coolant:                              yes                      no

# QUESTION FORMS

Longueur de la bande de roulement déployée  $A_z$  : \_\_\_\_\_ mm  
 Length of the roller band extended  $A_z$ : \_\_\_\_\_ mm

Largeur de la bande de roulement  $B$  : \_\_\_\_\_ mm  
 Width of roll-up cover  $B$ : \_\_\_\_\_ mm

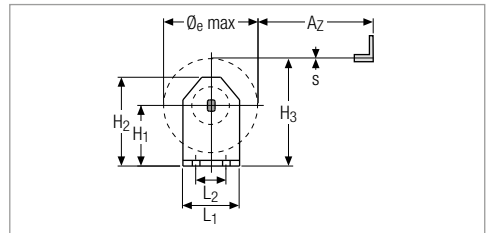
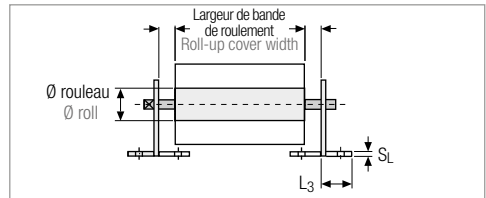
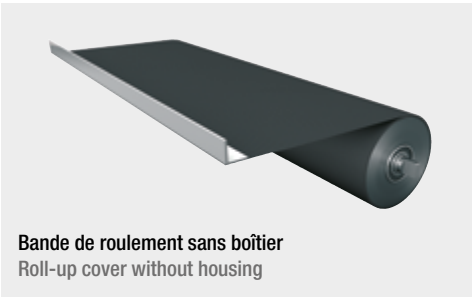
Course / déplacement  $L_s$  : \_\_\_\_\_ mm  
 Travel length/Stroke  $L_s$ : \_\_\_\_\_ mm

Vitesse de déplacement  $V$  : \_\_\_\_\_ m/min  
 Travel speed  $V$ : \_\_\_\_\_ m/min

Accélération  $a$  : \_\_\_\_\_ m/s<sup>2</sup>  
 Acceleration  $a$ : \_\_\_\_\_ m/s<sup>2</sup>

Espace d'installation pour bande de roulement ( $L \times l$ ) : \_\_\_\_\_ mm  
 Installation space wound up roll-up cover ( $L \times W$ ): \_\_\_\_\_ mm

## Modèles Versions



$H_1$  sur l'équerre de fixation dépend de la longueur de la bande, de l'épaisseur de la bande et ainsi, du diamètre de la bobine.

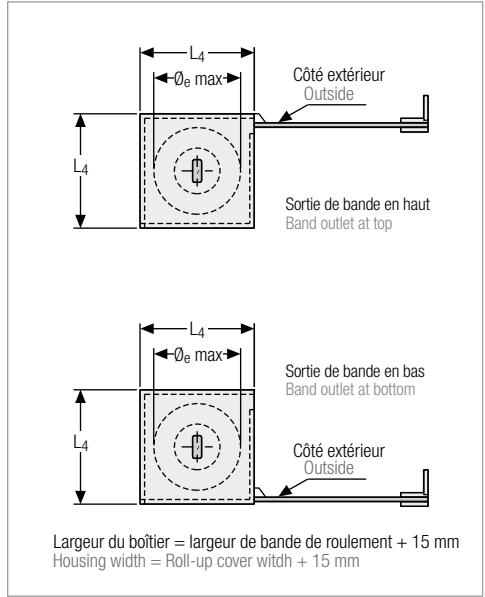
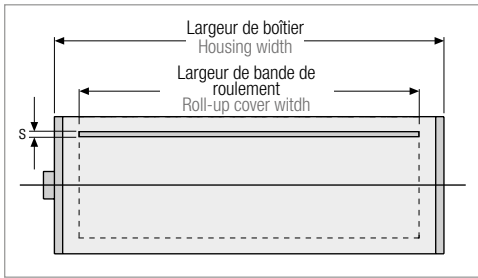
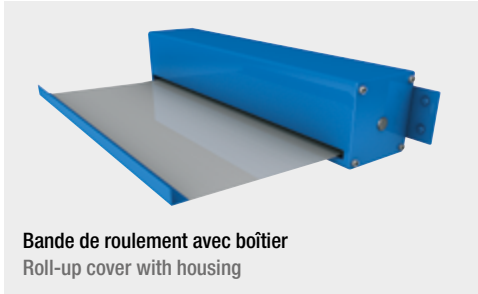
$H_1$  on fixing angle depends on the band length the band thickness and thereby the winding diameter.

Bande de roulement sans boîtier (modèle avec bande en plastique)  
 Roll-up cover without housing (version with plastic band)

## Informations complémentaires Supplementary information

Grid area for supplementary information.

# FORMULAIRES DE DEMANDE



Bande de roulement avec boîtier (modèle avec bande en plastique ou bande acier)  
Roll-up cover with housing (version with plastic or steel belt)

Sortie de bande en haut  
Band outlet at top

Sortie de bande en bas  
Bottom band outlet

## Matériaux Materials

Type de bande en plastique (choix du matériel selon l'utilisation par ex. PVC, PUR, Kevlar®)  
Plastic belt design version (material selection according to application e.g. PVC, PUR, Kevlar®)

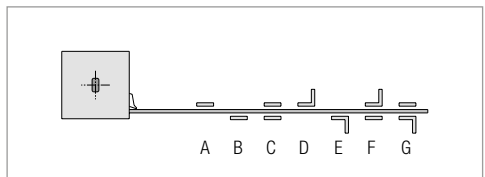
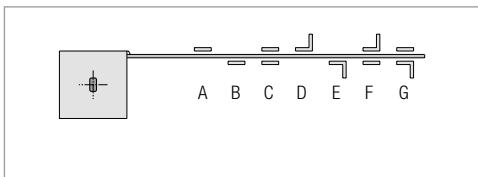
Type de bande en acier :  
Steel band design version:

INOX 0,2 mm  
INOX 0.2 mm

INOX 0,3 mm  
INOX 0.3 mm

INOX 0,4 mm  
INOX 0.4 mm

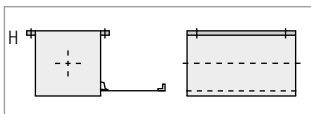
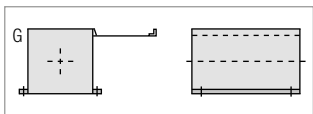
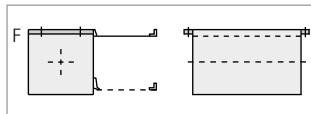
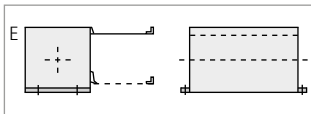
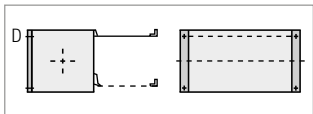
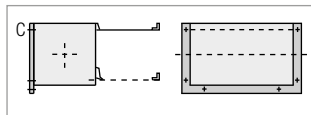
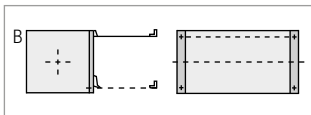
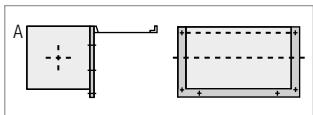
## Fixation de la bande sur la machine Belt fixing on machine



Type de fixation de la bande (par ex. 1D) :  
Band fixing version (e.g. 1D):

# QUESTION FORMS

## Raccord de fixation du boîtier Fixing connection of the housing



Type de fixation du boîtier (par ex. C) :  
Design version for housing fixing (e.g. C):

Schéma/Illustrations joint(e)s :  
Sketch/Pictures enclosed:

oui  
yes

non  
no

## Informations complémentaires Supplementary information

Grid area for supplementary information.