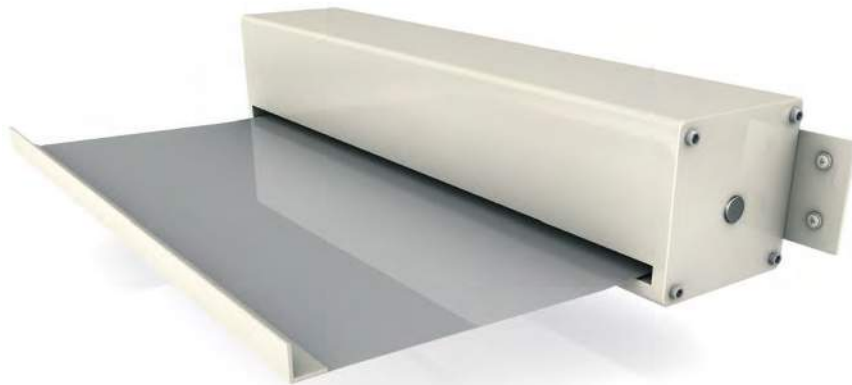


Roll-up covers

Protection in a minimum of space

KABELSCHLEPP roll-up covers serve to protect contact surfaces and guideways on all kinds of machine.



Properties

- For high travel speeds
- Minimal space required
- Customized production
- Simple installation
- Long service life
- Cost-effective

Designs

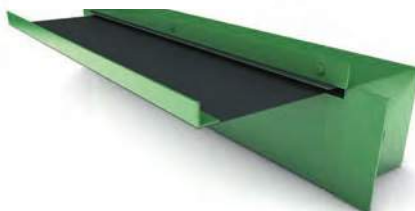
Roll-up cover without housing

Roll-up covers without a housing are suitable for areas with limited space, and facilitate optimal integration into the machine enclosure.



Roll-up cover with housing

Roll-up covers with an additional housing made of steel or aluminum protect the standard roll-up cover and allow simple installation or retrofitting.





Roll-up covers with plastic band

- Reliable protection against cutting waste, oil and cooling emulsions
- Particularly suitable for high travel speeds thanks to its low own weight
- Minimal space required
- Very resistant to tearing due to plastic layered special fabric
- Various materials are possible



Roll-up covers with steel band

- Very good protection against cutting waste, oil and cooling emulsions
- Rust-resistant and acid-resistant spring band steel with thickness from 0.2 to 0.4 mm
- Suitable for high travel speeds and greater mechanical loads
- Only available with housing

